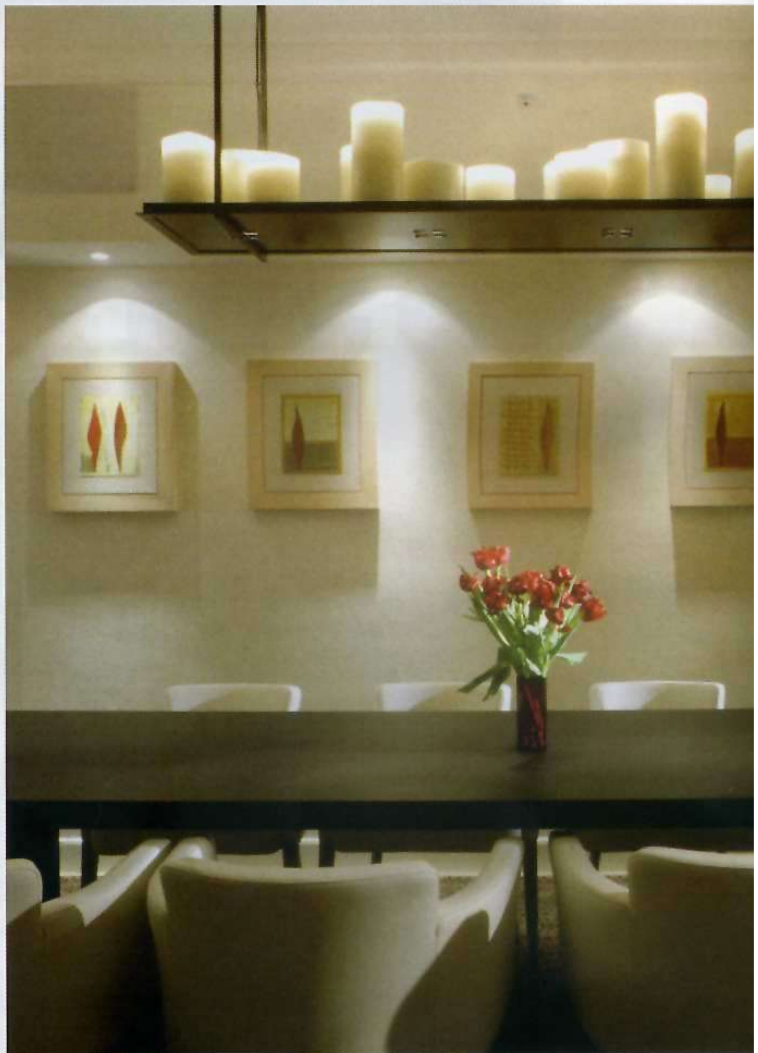


A QUIET ELEGANCE

An understated, contemporary design enlivens this Florida retreat

With the recent boom in highrise waterfront living, designers are faced with a unique situation, as often abundant ocean views are incorporated into the planning and interior design work. For architect J.P. Friedman, of J.P. Friedman & Associates, the natural steel blue backdrop presented less of a dilemma and more of a serene canvas. Combined with creative lighting and soft textures, Friedman formed a highrise coastal haven.



INTERIOR ARCHITECTURE AND DECORATION: JOSEPH FRIEDMAN, ARCH. (J.P. FRIEDMAN & ASSOCIATES, BASED IN NYC & TEL-AVIV) PROJECT MANAGER: ILAN ORAYON, ARCH.

Waterfront Condo in Miami, Lincoln Road Magazine (LRM), No. 21, Year Four, pp. 54-59.
By Sierra Baker
Photos: Jonathan Rachline



An oblong doorway is accented by a vintage 1940s mirror and an alabaster light fixture. Rug: Minotti; Floor mosaic by Ann Sacks.



A dusk backdrop adds to the unique design, playful furniture and grand French marble floor. Bar stools: Bombo by Magis, Italy; light fixtures: Lunatica; mosaic tiles: Bizazza.



Soft candles and accent lighting create an inviting mood in the dining room. Table and chairs by Cassina; candle sconces and central candle light fixture by Holly Hunt.